

Unit 35  
North Tyne Industrial Estate  
Longbenton  
Newcastle Upon Tyne  
NE12 9SZ

0191 215 0530

This document is protected by © and design right. It must not be copied in any way, nor its contents divulged to a third party without our written consent.

Please note, dimensions should be verified against all existing component drawings where relevant.

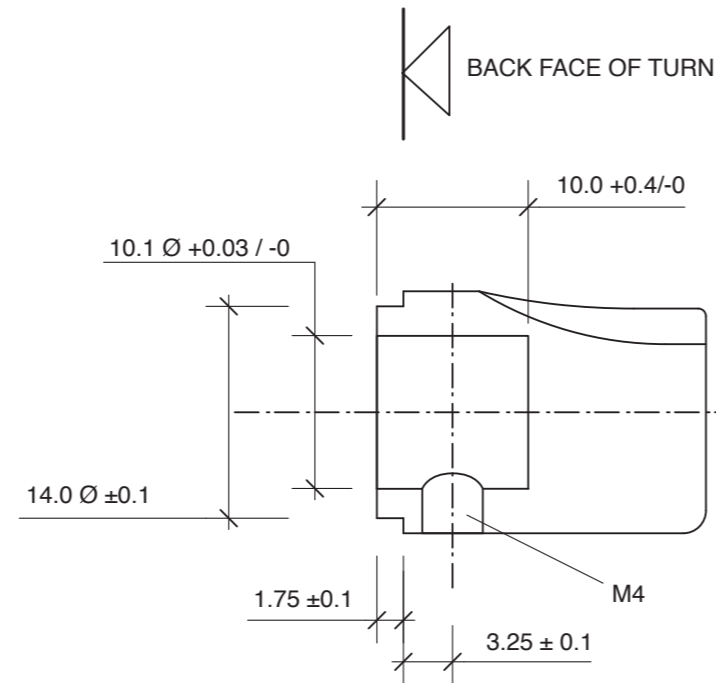
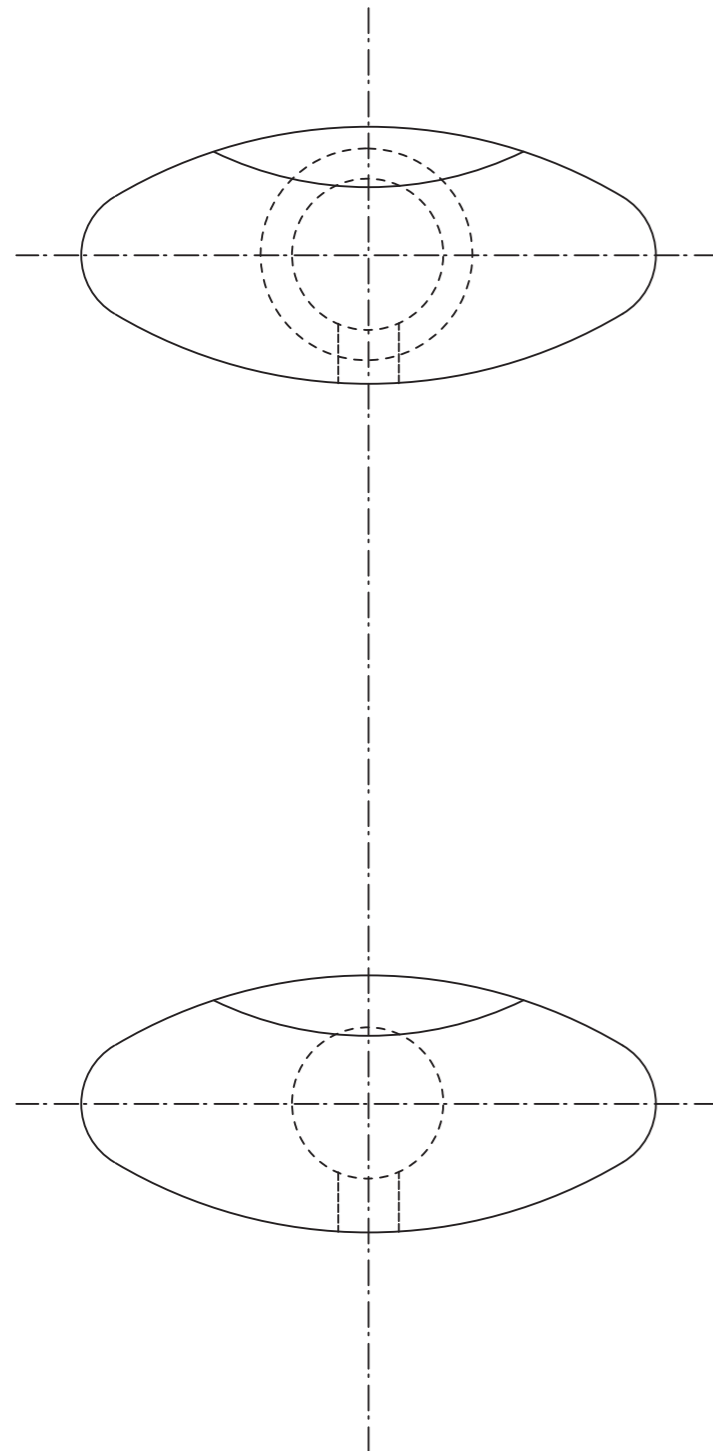
Notes:

Date: 8th June 2010

Drawing scale/s 2:1

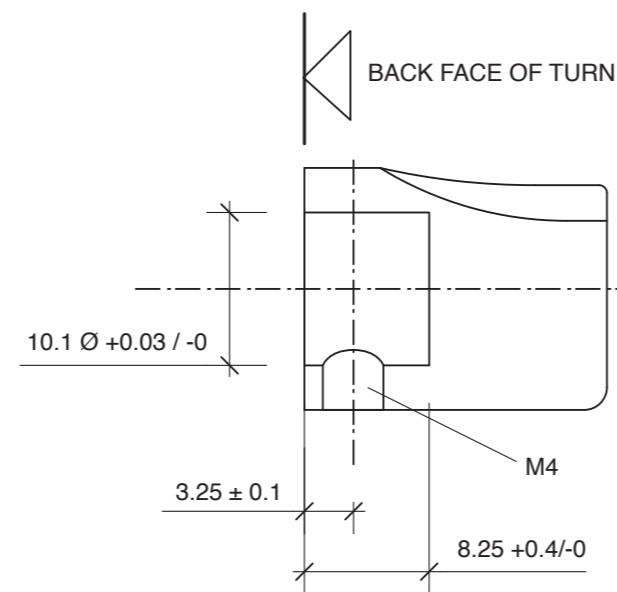
Note: all dimensions are in mm

Drawing No.



### PREFERRED OPTION

TURNS WITH OPTIONAL COLLAR. THE COLLAR AT THE BACK OF THE TURN CONCEALS THE BRASS SPINDLE OF THE CYLINDER. THE COLLAR SITS INSIDE THE BODY OF THE CYLINDER.



### ALTERNATIVE OPTION

WHEN SET UP WITH THE GRUB SCREW IN THIS POSITION IT ALLOWS A SPACE BETWEEN THE TURN AND THE CYLINDER BODY TO PREVENT BINDING. THIS OPTION SHOULD ONLY BE USED WITH ANTI-LIGATURE ESCUTCHEONS THAT WILL CONCEAL THE BRASS SPINDLE.

PLEASE NOTE: WHEN USING ANTI-LIGATURE TURNS, BOTH OF THE OPTIONS ABOVE WILL PROVIDE A LIGATURE POINT. IT IS ESSENTIAL THEREFORE THAT A SUITABLE ANTI-LIGATURE ESCUTCHEON IS USED IN THESE SITUATIONS TO CONCEAL THE LIGATURE POINT.